

SAFE-N-SECURE **Digital Video Recorder**



**Apple iOS Setup for
Unisight Pro**

SNSDVR iOS Device Setup

Getting Started: What you will need

1. iPod Touch, iPad, or iPhone
2. Apple App Store Account
3. Appropriate client for your DVR device installed on your device.
(See instructions for details).

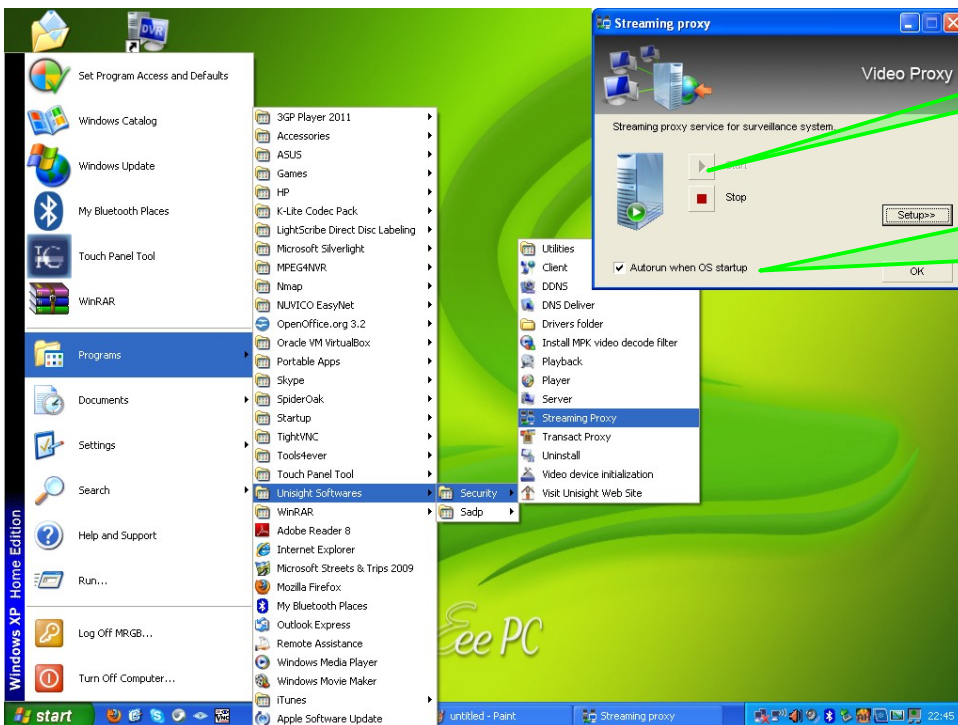


For PC DVRs using x.10.0920 (Ex. 2.10.0920)
Use Unisight Client

For PC DVRs using x.11.0629
Use Unisight Client Pro

For Standalone systems (non-HB)
Use IVMS-4500 Lite

One last step before you begin: on the DVR start the Video Gateway (a.k.a streaming proxy).



Click Start

Be sure to check
"Autorun when OS Startup."

SNSDVR iOS Device Setup

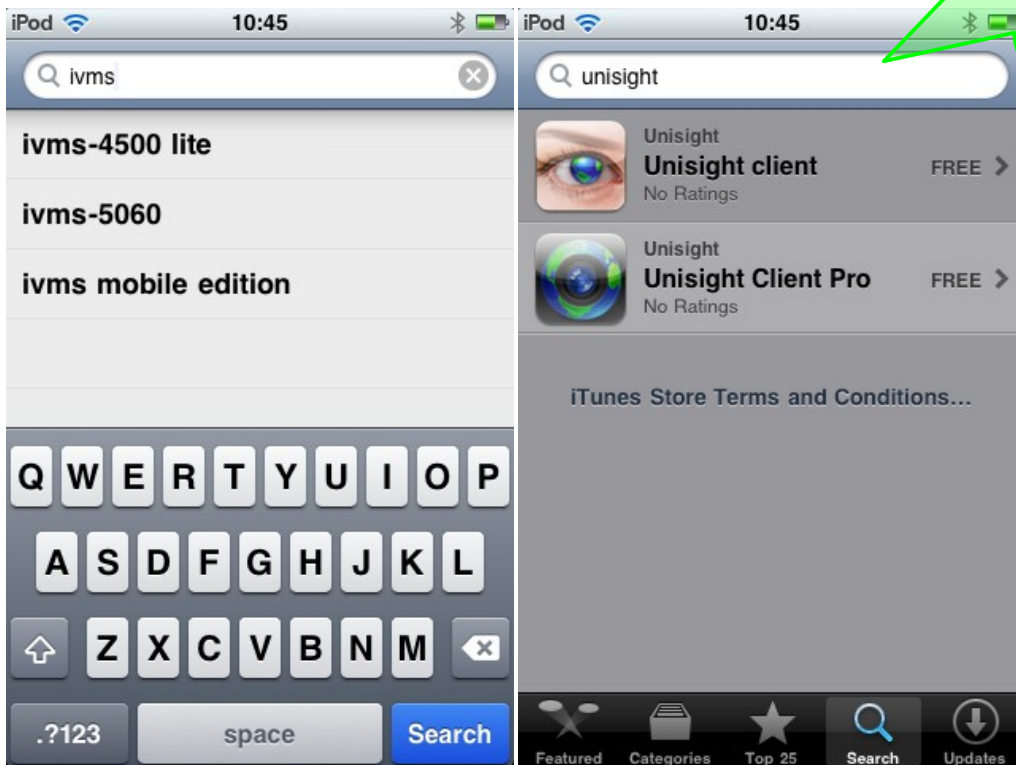
Getting Started: Install



You will need to sign in to the iTunes App Store with your iTunes ID

Use the search feature to search for either "unisight" or "ivms".

Select ivms 4500 lite for standalone DVRs.



iTunes Store Terms and Conditions...

SNSDVR iOS Device Setup

Getting Started: Your icon here.

Unisight Legacy

Requirements

Software: x.10.0920

Ports: 8000, 8003

Unisight Pro

Requirements

Software: x.11.0629

Ports: 8000, 8003, 554

IVMS 4500 Lite

Requirements

Software: x.11.0629

Ports: 8000, 554

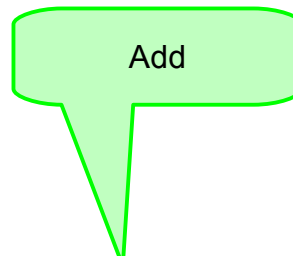


A note on forwarding ports

1. Setting up port forwarding on a network will vary greatly from network to network.
2. If not done properly, port forwarding can cause a network security risk.
3. The ports listed currently do not cause PCI compliance issues.
4. If none of this makes sense, contact support.

SNSDVR iOS Device Setup

Unisight Pro: Setup



SNSDVR iOS Device Setup

Unisight Pro: Setup

iPod 10:35

My Devices **Device Details** Done

General Info

Name: DVR SNS

Type: PC_DEVICE

Channels: 4

1 2 3 4 5 6 7 8 9 0

- / : ; () \$ & @ "

#+= . , ? ! ' <

ABC space Done

Give your DVR a unique name.

There are options for other devices, however, PC_DEVICE is correct.

Be sure to enter the total number of channels before clicking done at the top of the page.

iPod 10:37

My Devices **Device Details** Done

IP Info

Host IP: 10.0.0.148

Port: 8000

Relay IP: 10.0.0.148

Port: 8003

Other Info

User: Supervisor

Password:

Frame: 5

The address of your DVR or network if setting up and outside connection.

Enter 8000 here.

This is the same as the Host address

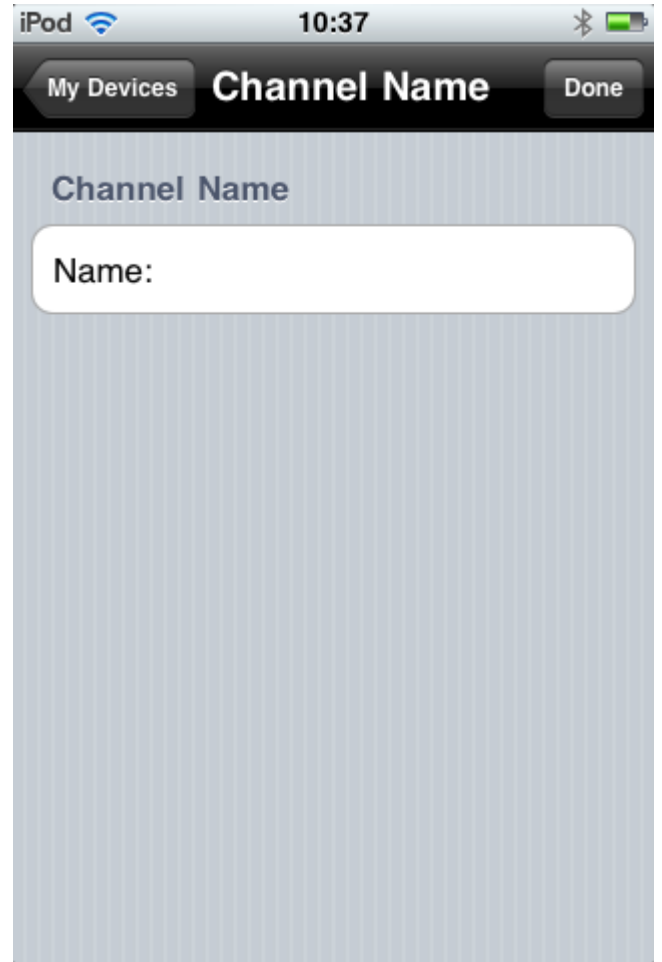
If this is different than pictured, change to 8003

Default username is Supervisor
By default, there is no password

For best results, leave this at 5

SNSDVR iOS Device Setup

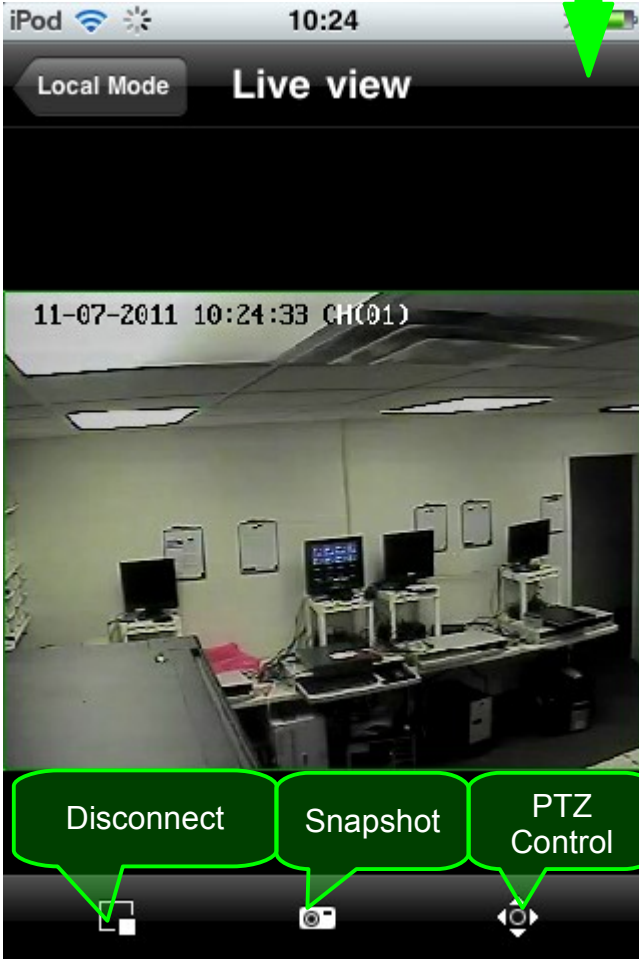
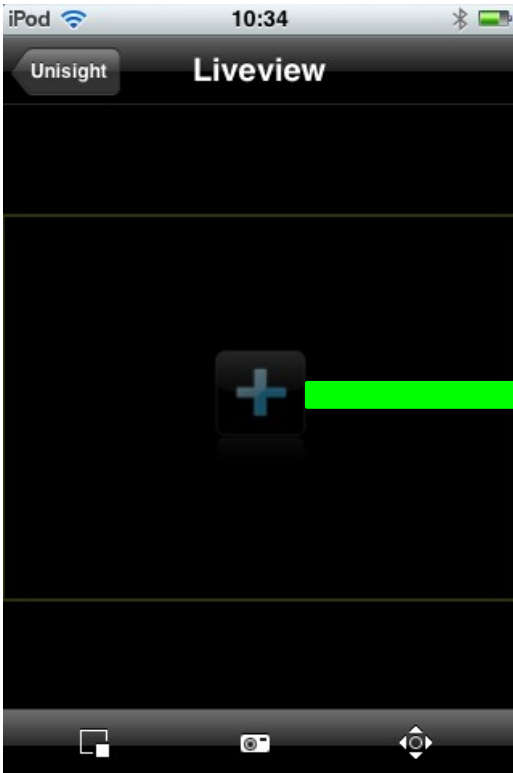
Unisight Pro: Setup



In the Pro software you can name each channel. Be sure to use only alpha-numeric characters.

SNSDVR iOS Device Setup

Unisight Pro: Live view



Turning the iDevice on its side will activate full-screen mode.



SNSDVR iOS Device Setup

Unisight Pro: Playback

